

SC403

RFID Access Control Terminal



SC403 is a RFID Access Control Terminal that enables a simple and easy control. It has a built-in auxiliary input function which enhances the flexibility to be connected with wired detector or emergency switch. With multi-verification methods by combinations of PIN, password and card, high level of security and flexibility are guaranteed. Moreover, the product supports USB flash drive for offline data management. Its convenience and adaptability allow it to be well deployed in residential housing, offices and any other public facilities.

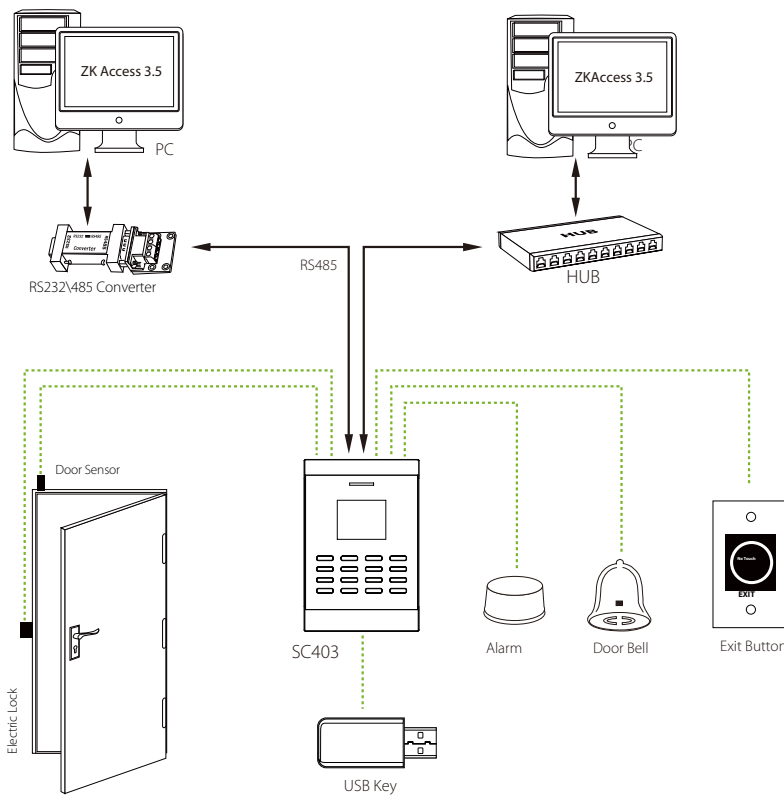
Features

- Built-in serial and ethernet ports sensor
- Built-in weigand input/output ports
- Built-in USB port allows for manual data transfer
- Tamper switch
- Supports 50 time zones, 5 groups, and 10 combinations
- Less than 1 second user recognition

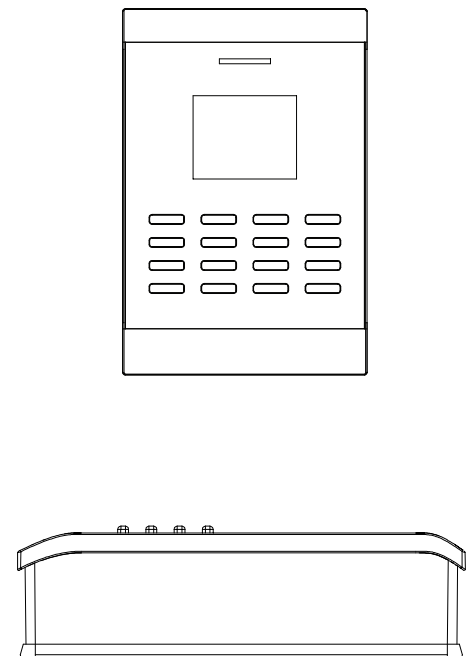
Specifications

ID card Capacity	30,000
Transaction Capacity	50,000
Communication	TCP/IP, RS485, USB-Host
Access Control Interface for	3rd party electric lock, door sensor, exit button, alarm, door alarm
Access Control Functions	50 time zones, 5 access control groups, 10 combinations
Wiegand Ports	Output any bits
Built-in Card Reader	125kHz RFID proximity reader
Reader Range	5 -10cm
Power Supply	12V DC 3A
Operating Temperature	0°C ~ 45°C
Operating Humidity	20% - 80%
Dimension	99 x 194 x 43mm (LxWxH)
Software	ZKAccess3.5

Configuration



Dimensions (mm)



ZKTeco Middle East
 E-mail: zk_me@zkteco.com
www.zkteco.me

© Copyright 2015 ZKTeco Inc. ZKTeco Logo is a registered trademark of ZKTeco or a related company. All other product and company names mentioned are used for identification purposes only and may be the trademarks of their respective owners. All specifications are subject to change without notice. All rights reserved.